

# BladeRep® LEP 10

## 1. Introduction

ALEXIT® BladeRep® LEP 10 is a specifically designed one-layer coating with excellent abrasion and erosion resistance. This two-component, solvent free polyurethane product has superior elasticity and flexibility for long-term leading edge protection.

## 2. Range of application

ALEXIT® BladeRep® LEP 10 is used for extra protection on highly stressed areas like leading edges of wind turbine rotor blades.

## 3. Color

Similar to 7035 light grey. This product dries to a glossy finish.

## 4. Coverage

	m <sup>2</sup> / cartridge	Square feet / cartridge
<b>Theoretical coverage at 600 µm / 24 mil of mixed material approx.</b>	<b>0,7</b>	<b>7</b>

**Reommended dry film thickness:** minimum 600 µm (24 mil)

## 5. Substrate pre-treatment

Sand the surface with 120 grit paper prior to applying ALEXIT® BladeRep® LEP 10. The surface must be clean, dry and free from dust, grease, oil and other contaminates. ALEXIT® BladeRep® LEP 10 may be applied over all BladeRep® products and/or any properly prepared surface.

## 6. Trade names/part no.

Cartridge BR1075 ALEXIT® BladeRep® LEP 10

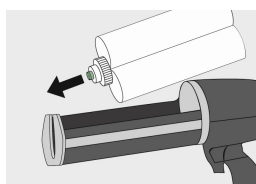
## 7. Mixing

Mix by volume: Must be processed through a static mixer.

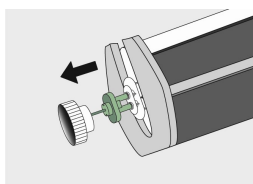
## 8. Equipment needed

- Cartridge
- **Option a)** Flex hose brush incl. static mixer or **Option b)** Static mixer
  - a) Flex hose brush incl. static mixer available in sets (see 13. Packaging)
  - b) Static mixer reference: Sulzer MFH 08-32T or similar (supplied separately)
- Finish brush
- Dispenser: Sulzer Mixpac DP2X 400-01-50-01 (pneumatic) or Cox ElectraFlow Dual Ultra 400 MR 1:1 (battery driven) or equivalent with 1:1 mixing ratio

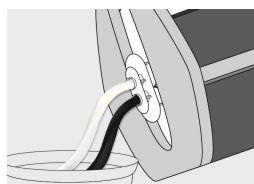
## 9. Preparation



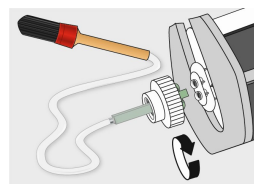
Put cartridge into dispenser.



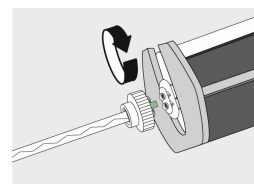
Remove cap from cartridge.



Press trigger until A and B components flow evenly.



**Option a)**  
Mount mixer with flex hose brush onto the cartridge and apply material.



**Option b)**  
Mount static mixer onto the cartridge and apply material.

**For Professional Use Only**

**Page 1 of 2**

The information contained in this data sheet is based on our level of research and development. Revisal by the user with regard to the intended aim is necessary due to the diverse processing and application possibilities.

[www.bladerep.com](http://www.bladerep.com)

Revision March 2023

# BladeRep® LEP 10

## 10. Application

Apply by Flex hose brush or static mixer and level with Finish brush.

Application conditions:

15-35°C (60-95 °F) and 20-85 % relative humidity. The minimum application condition should be 3°C (5.4°F) above dew point.

Application process for brushing:

Apply 1 layer of ALEXIT® BladeRep® LEP 10 to a wet film thickness of minimum 600 µm (24 mil) by using the Flex hose brush or static mixer, followed by the Finish brush for proper smoothing and levelling.

## 11. Pot life

5 - 10 min at 23 °C (73 °F)

## 12. Drying time

	15 °C (60 °F)	23 °C (73 °F)	30 °C (86 °F)
approx. 50% relative humidity	4 h	3 h	2 h

## 13. Packaging

Set A: 12x 400 ml cartridges

Set B: 12x 400 ml cartridges + 12x Finish brushes

Set C: 12x 400 ml cartridges + 12x Flex hose brushes + 12x Finish brushes

Supplied separately: static mixer, flex hose brush and finish brush

Please note: full set supplies only.

## 14. Storage

Store in original, unopened containers at a temperature of 5° - 35 °C (41 - 95 °F)  
(in acc. with DIN EN 3840:2007).



Approved by DNV in combination with ALEXIT® BladeRep® Profile Filler 5 and Topcoat 12 (TA-DNVGL-CP-0424-07729-0)

**For Professional Use Only**

**Page 2 of 2**

The information contained in this data sheet is based on our level of research and development. Revisal by the user with regard to the intended aim is necessary due to the diverse processing and application possibilities.

[www.bladerep.com](http://www.bladerep.com)

Revision March 2023